

Specifications

3.5"Color TFT Display (UART)



Supplier: Zhejiang Bluepoint Power Co., Ltd.

Address: Bld 19, No.488-1, North Donghu Road, Linping District,
Hangzhou City, Zhejiang Province, China. 311100

Tel: +86 -571-88866688

Email: lddl@ld-zj.com

1、Product Name

Color TFT Display, Model C351。

2、Specifications

Working Voltage: DC24V-DC100V

PL+ Maximum output: PL+ Maximum load current: 800mA

Rated Current: 5mA/39V

Maximum Voltage: 25mA/39V

Shutdown leakage current <1uA

Operating temperature- 20 ~ 45°C

Storage temperature -30 ~ 70°C

IP Level: IP65

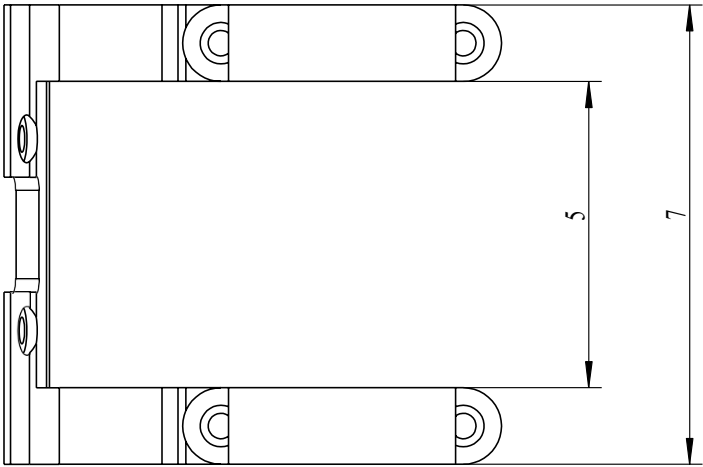
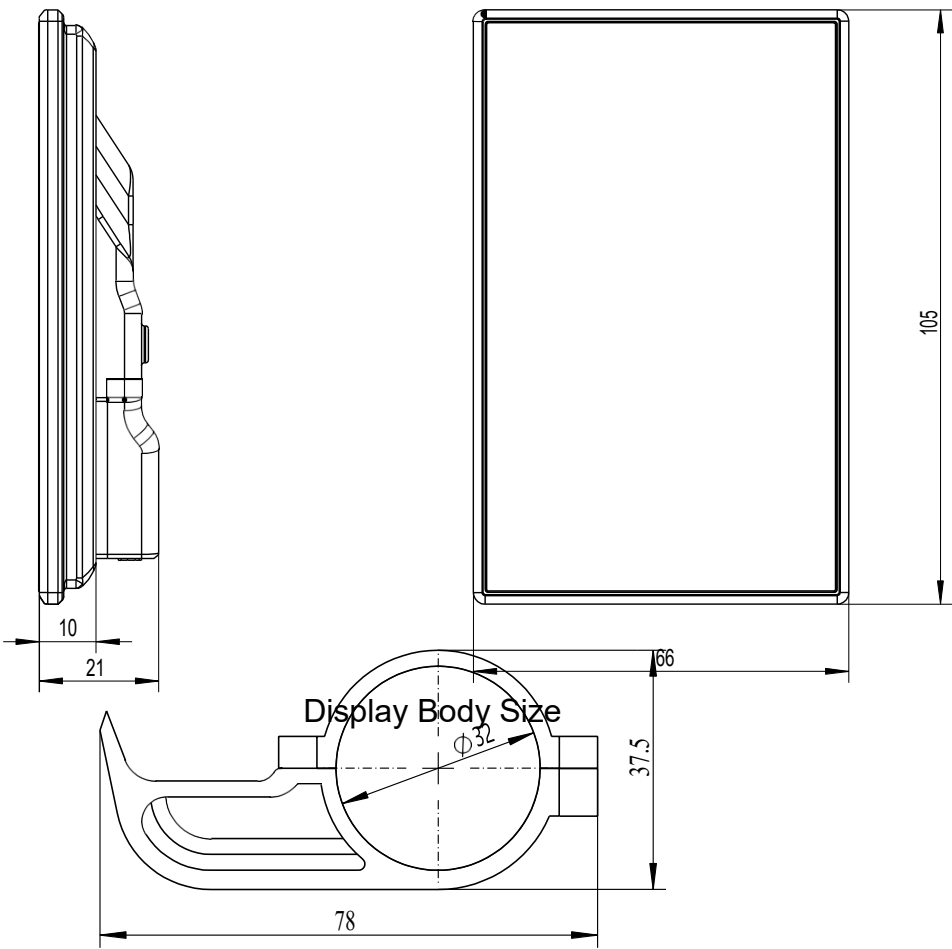
3、Appearance Material and Size

3-1、Material

The product shell is made of black ABS material, the display window is made of PC transparent material, the button is made of silicon rubber material, and the bracket is made of black nylon material.



3-2、Size



Bracket hoop size



4、LCD Display Description

Headlight Indication: Indicates when the headlights are on.

Power icon: Displays the current remaining battery capacity.


Live Speed: Displays the speed while riding, km/h (kilometers per hour) mph (miles per hour), switchable. AVG: Average speed MAX: Maximum speed

TIME: Single ride time TRIP: Single mileage ODO: Total mileage

RANG: cruising range (the cruising range data is displayed in non-0 gear, and the 0 gear or assist gear displays --)

Cal: calorie (only when the controller sends calorie data, this item will not be displayed if it is not sent)

Gear: Displays the current assist gear, 0~3/0~5/0~9 gears are adjustable, of

which 0 means no assist in neutral, 1~9 corresponds to assist gear,  is




Zhejiang Bluepoint Power Co., Ltd.

assist mode.。


The Display has three buttons. Including power/model button, Plus button, Minus button

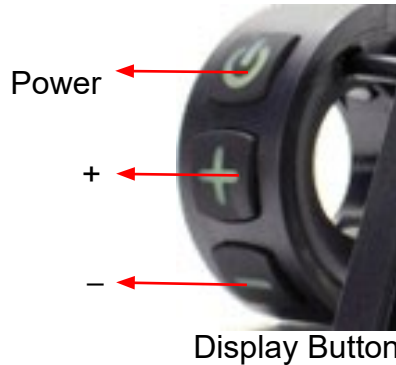


In the following description,

 replaced with the word "Power",



replaced with the word "+",  replaced with the word "-".



5、General operation and function description

“Long press the button>3S”Replay with the word “Long press”, “Short press the button<0.5S”Replay with the word “Short press”。

5-1、Power On/Power Off

When the display is power off, long press “Power”, Display power on;

When the display is power on, long press “Power”, Display power off。

5-2 、 Assist gear switch

Short press“+”or“-”, Switch the assist gear, the lowest gear is Gear1, the highest gear is Gear9, and the Gear0 is neutral without assistance.

5-3、 Assist mode

When the speed is zero, you can long press“-”in any gear to enter the assist status, the assist icon will be displayed, and releasing the“-”the display will immediately return to the gear before the assisting.

5-4 、 Headlight Turn on/off

Turn on: long press the“+” when the light is off, the headlight icon will be displayed and inform the controller to turn on the light.

Turn off: Long press the“+”when the light is on, the headlight icon disappeared and inform the controller to turn off the light.

5-5 、 Parameter switch

Main interface short press the “power”, Cyclable display the TRIP (single mileage) /ODO (total mileage) -MAX(maximum speed)/AVG (average speed) -TIME (riding time) /TRIP (single mileage) -RANG (driving range) /CAL (calorie) 。

5-6 、 USB Charge

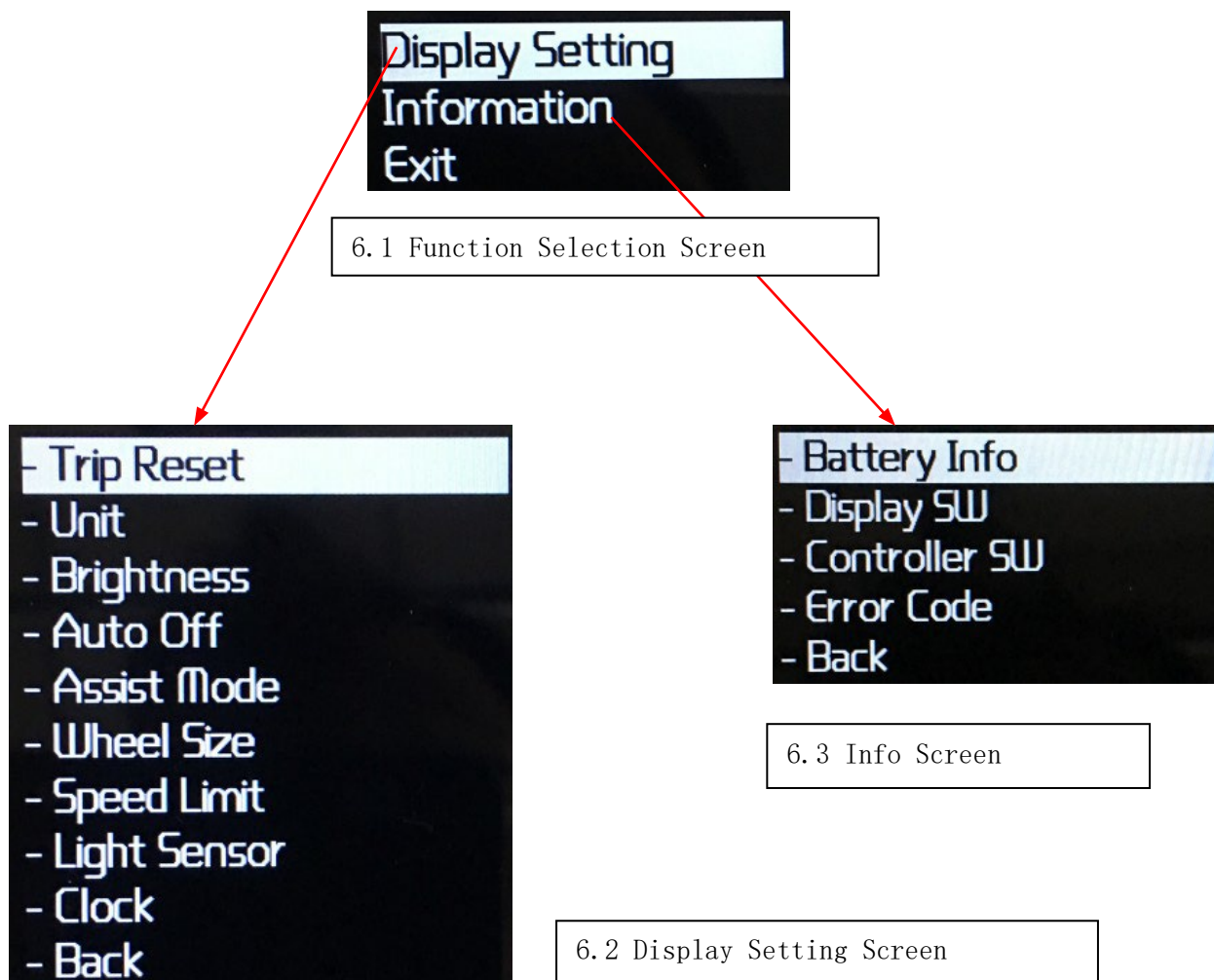
You can charge your phone during the ride by connecting the USB cable to the display USB port.。

5-7 、 Bluetooth

Customizable option to install Bluetooth module to control the meter via Bluetooth APP.

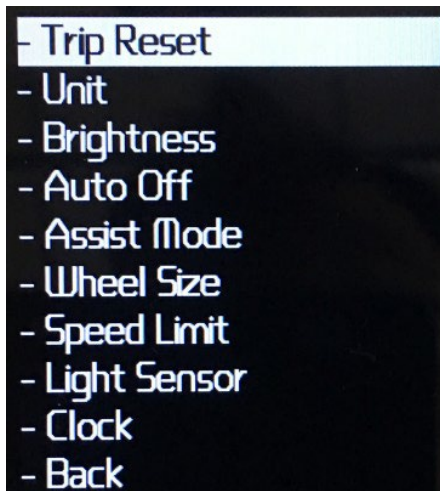
6、 Function Selection

When the speed is zero, long press the“+”&“-”in the main screen at a same time, to enter the function selection screen, short press the“+”or“-”,cyclable select the display setting, information and exit, short press the "power" to enter the corresponding secondary screen



7、Display Setting

Short press “+” or “-” in the display setting screen, to select the trip reset, unit, brightness, auto off, assist mode, wheel size, speed limit, light sensor, clock, and back.



REMARK: After setting, return to the main screen to take effect

7-1 、 Trip Reset

Enter “Display Setting” screen, short press “+” or “-” select the “Trip Reset”, short press “power” to setting screen, then short press “+” or “-” select “NO”/“YES” (“YES” means reset, “NO” means do not reset), short press the “power” to save and exit to “TRIP Reset”, select “Back” → “Exit” exit to the main screen。 When “TRIP” is reset, the riding time, average speed, and maximum speed are reset at the same time.

7-2 、 Imperial and Metric Unit Conversion

Enter the “Display Setting” menu, short press the “+” or “-” select the “Unit”, short press “power” to enter the setting screen, then short press “+” or “-” select “Metric”/“Imperial”, short press “power” save and exit to “Unit”, select “Back”→“Exit” exit to the main screen。 REMARK: If you select the metric unit. All information on the main screen is in the metric unit, and the imperial unit is the same as above.



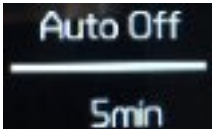
7-3 、 Brightness Setting

Enter the “Display Setting” menu, short press the “+” or “-” select “Brightness”, short press “power” to enter the setting, then short press the “+” or “-”, select “100%”/“75%”/“50%”/“30%”/“10%”, short press the “power” save and exit to “Brightness”, select “Back”→“Exit” exit to the main screen.



7-4 、 Auto power off time setting

Enter the “Display Setting” menu, short press the “+” or “-” select “AutoOff”, short press the “power” to enter setting, then short press the “+” or “-” select the auto power off time, select range from 0 to 9, “OFF” means 0 do not auto power off, short press the “power” save and exit to “Auto Off”, select “Back”→“Exit” exit to main screen.



7-5 、 Assist mode setting

Enter the “Display Setting” menu, short press the “+” or “-” select “Assist Mode”, short press the “power” to enter the setting , then short press the “+” or “-” select “3”/“5”/“9”, short press the “power” save and exit to “Assist Mode”, select the “Back”→“Exit” exit to the main screen.



7-6 、 Wheel size setting

Enter the Display Setting screen, short press the “+” or “-” select the Wheel Size, short press the “power” to enter the setting, then short press the “+” or “-” to select, size range from 6 to 34. Short press the “power” save and exit to “Wheel Size”, select “Back”→“Exit” exit to the main screen.



7-7 、 Speed limit setting

Enter the Display Setting screen, short press the “+” or “-” select Speed Limit, short press the “power” to enter the setting, then short press the “+” or “-” to select, speed limit range from 10 to 70. Short press the “power” save and exit to “Speed Limit”, select “Back”→“Exit” exit to the main screen.



7-8、Light sensor setting

Enter the Display Setting screen, short press the“ +” or“-” select Light Sensor, short press the“ power” to enter the setting, then short press the“+” or“-” select the“100%”/“75%”/“50%”/“30%”/“10%”, short press the “power” save and exit to “Light Sensor”, select “Back”→“Exit” exit to the main screen



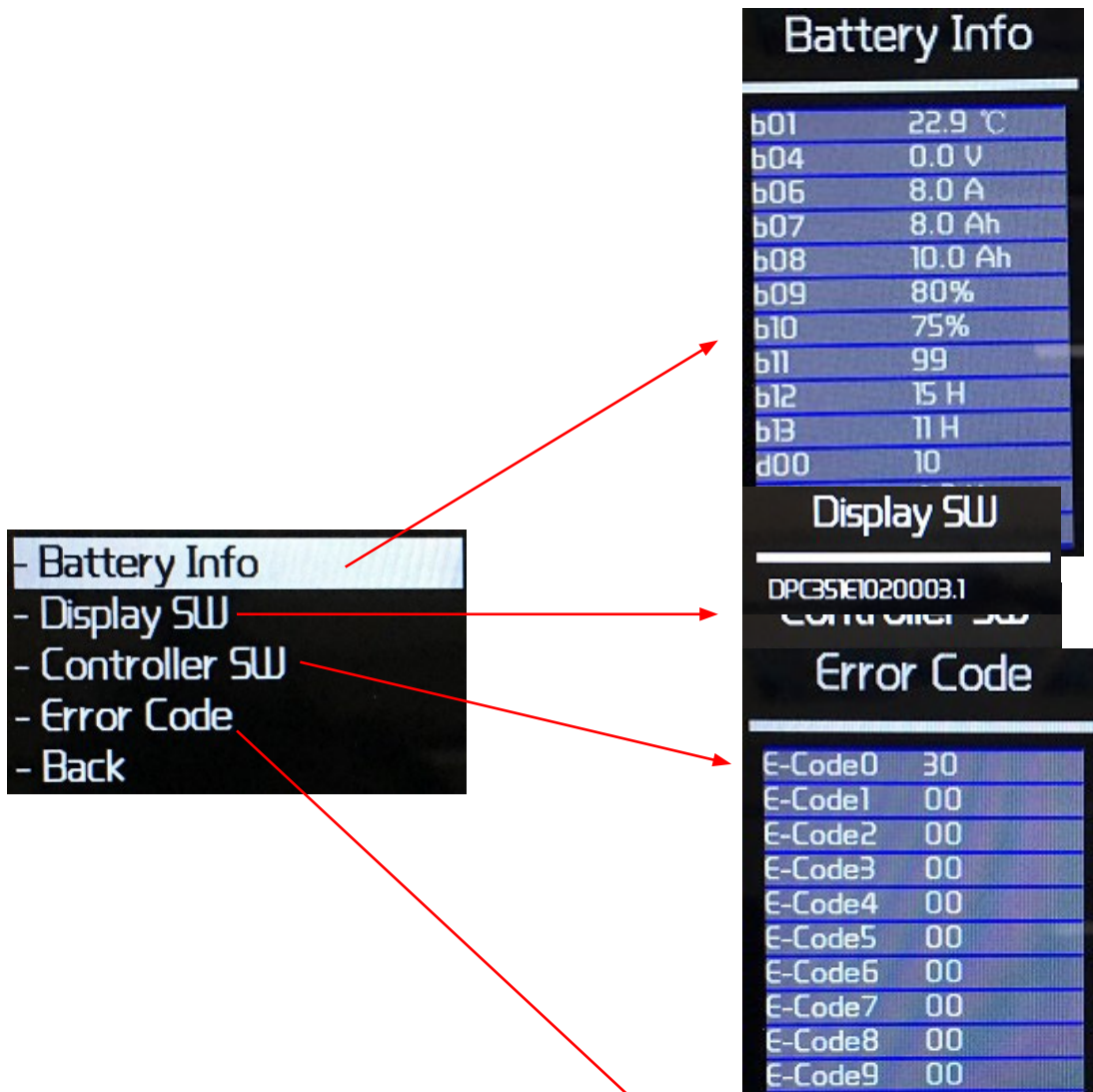
7-9、Clock setting

Enter the Display Setting screen, short press the“ +” or“-”select Clock, short press the “power” to enter the setting, then short press the “+” or“-” select “Year”/“Month”/“DAY”/“Hour”/“Minute”/“Second”, short press the “power” to enter the setting, then short press the“ +” or“-”to adjust the value of each option, then short press the “power” to complete the individual setting。 Select “Save & Back” short press “power” save and exit to “Clock”, or select “Back”-“Back”→“Exit” exit to the main screen.



8、Information

Short press the “+” or “-” in the information screen select the Battery info, display info, display SW, Controller SW, Error code, Back. Short press the “power” to enter the corresponding secondary screen.



Clear error logs: Press the “power” & “+” & “-” at the same time in this screen, the error logs will be cleared.

9、Error Code Reference Table

Error code values are based on the current configuration controller definition.
Represented in hexadecimal.

Error Code	Meanings	Remark
E03	Braked	Not displayed
E04	The throttle does not retune to the position (stop at the high position)	
E05	Throttle failure	
E06	Low voltage protection	
E07	Overvoltage protection	
E08	Motor hall signal wire failure	
E09	Motor phase line failure	
E10	Motor temperature reaches temperature protection point	
E11	Motor temperature sensor fault	
E12	Current sensor fault	
E13	Temperature failure inside the battery	
E14	Controller temperature reaches temperature protection point	
E15	Temperature sensor failure in controller	
E21	Speed sensor failure	
E22	BMS Communication failure	The display does not read the message, display—No code is displayed.
E23	Headlight failure	
E24	Headlight sensor failure	
E25	Torque sensor torque signal failure	
E26	Torque sensor speed failure	
E30	Communication failure	The display automatically detects



		communication failures. The controller does not upload this information
--	--	---